



---

---

---

---


**RECOMMENDED OPERATING CONDITIONS**


**ESD RATINGS**

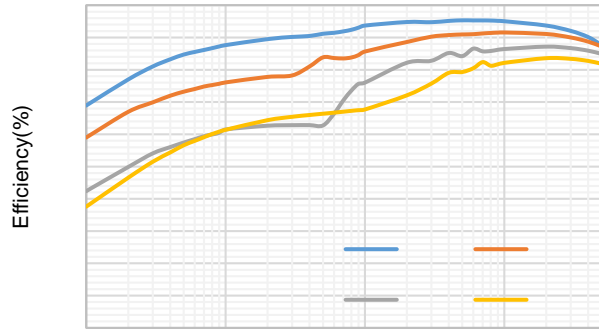

- (1)
- (2)

**THERMAL INFORMATION**

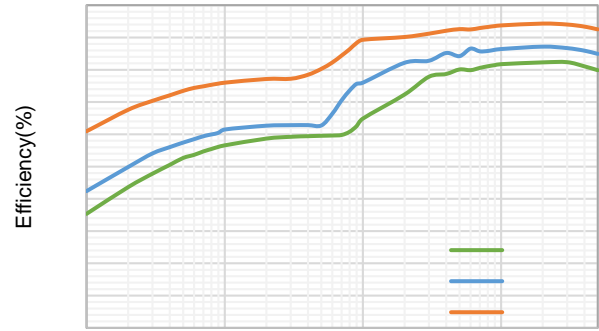

**ELECTRICAL CHARACTERISTICS**



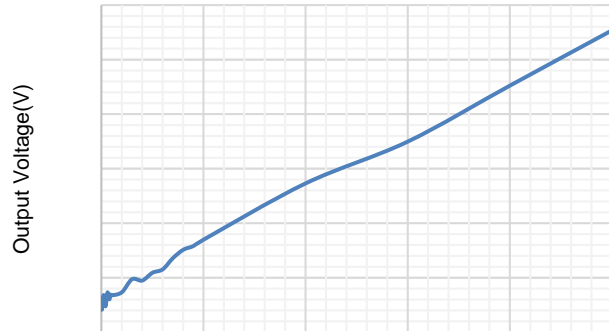

# TYPICAL CHARACTERISTICS



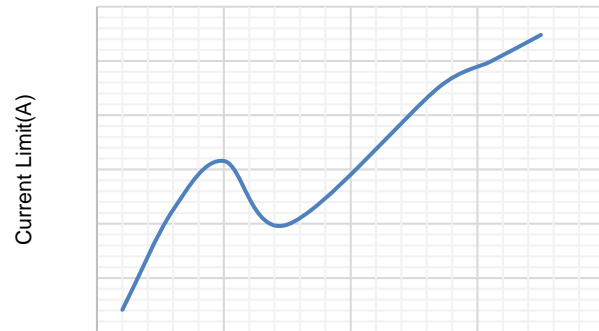
Output Current(A)



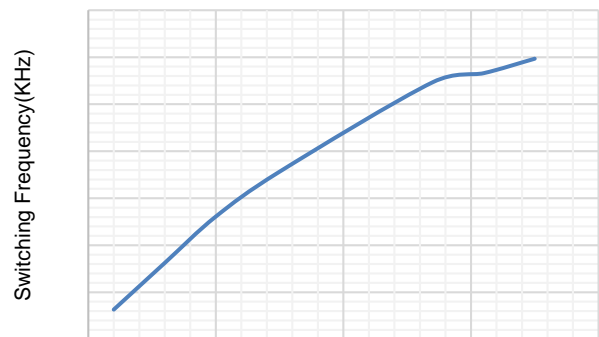
Output Current(A)



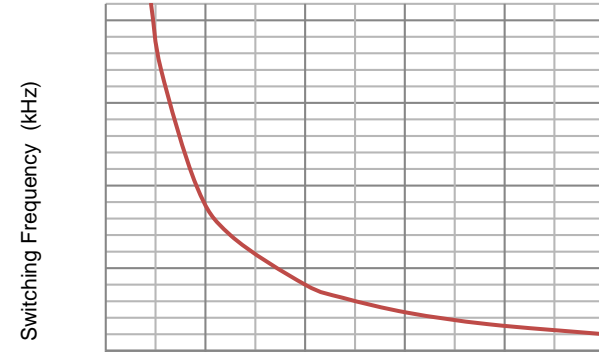
Output Current(A)



Temperature(°C)

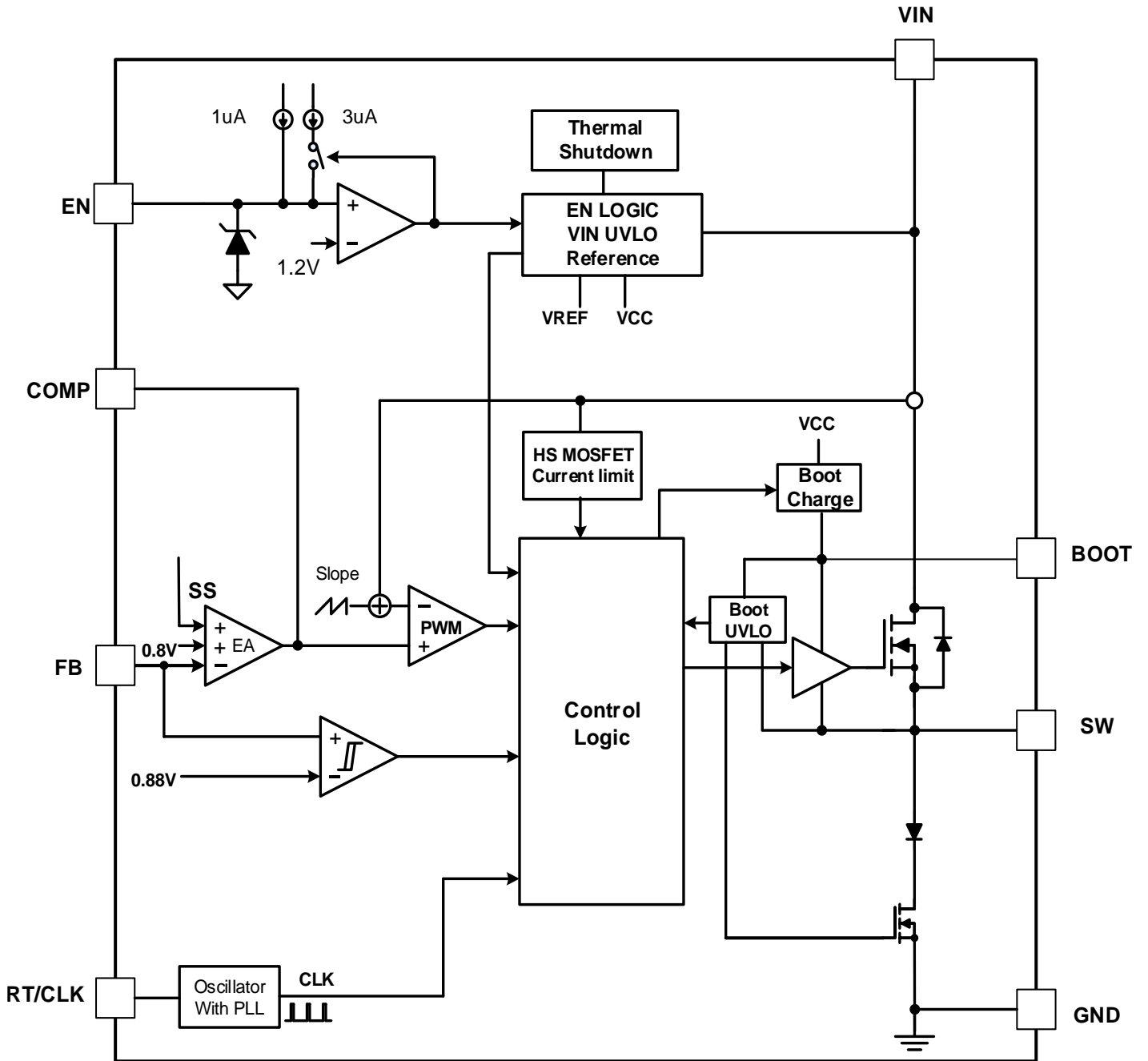


Temperature(°C)



Switching Frequency (KHz)

# FUNCTIONAL BLOCK DIAGRAM

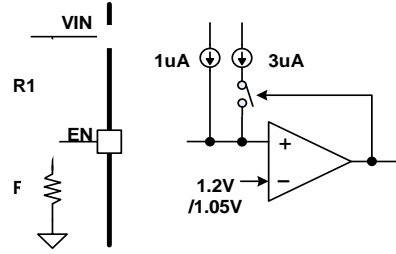


---

**OPERATION**

$$5 \frac{21}{75}$$

$$\frac{5}{5}$$



1%



— 5







---



— 5


5




---

WR

FDQ EH d 'nen-U</MC410.02 Tf 1 0 0 1 357.52 623.74 Tm 0 g 0 G

S



---

— 5 —

—  
2

5 —  
— 5 —

— 5 —  
— 5 —



—

5      —

5      —

5

5

5

—      —

—      —

—

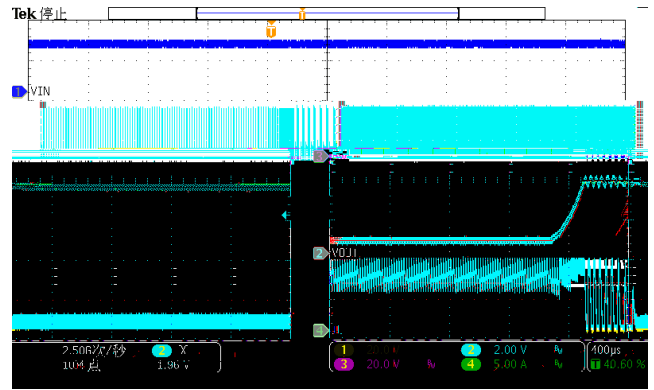
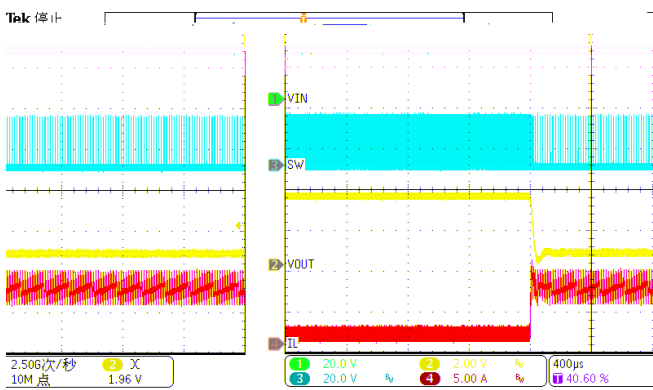
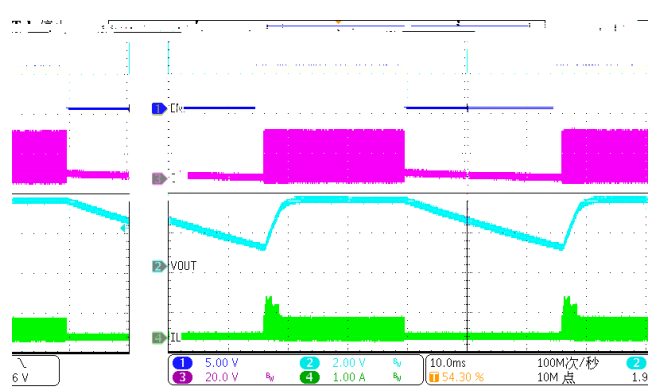
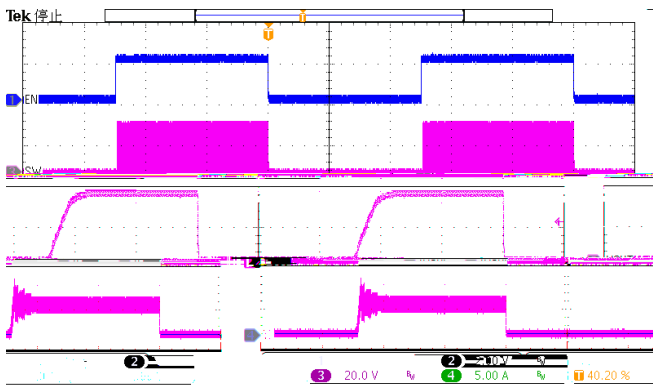
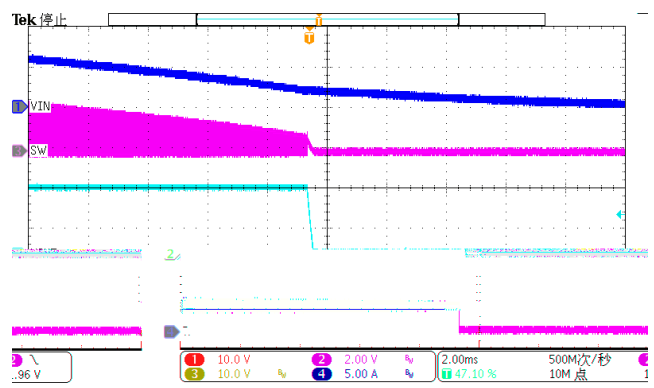
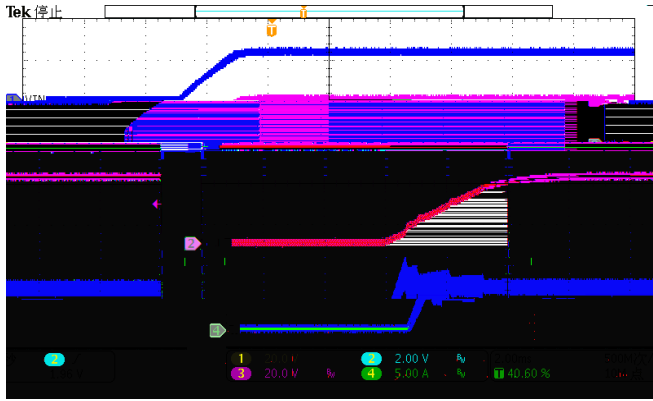
—

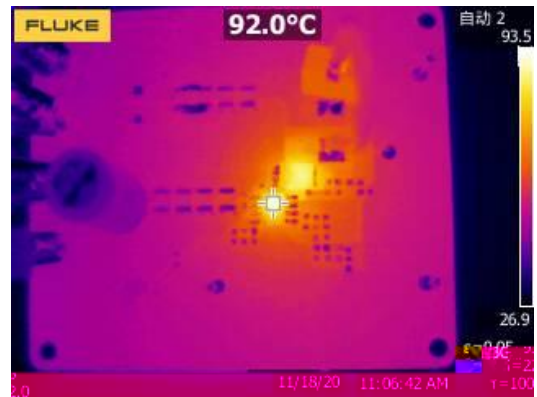
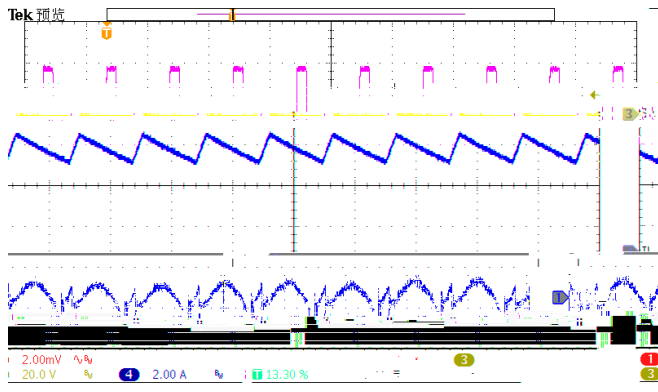
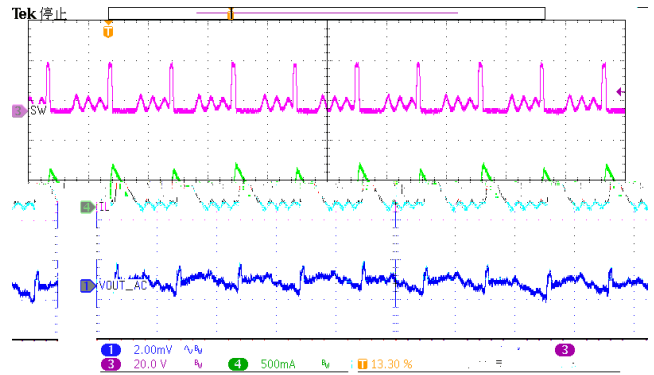
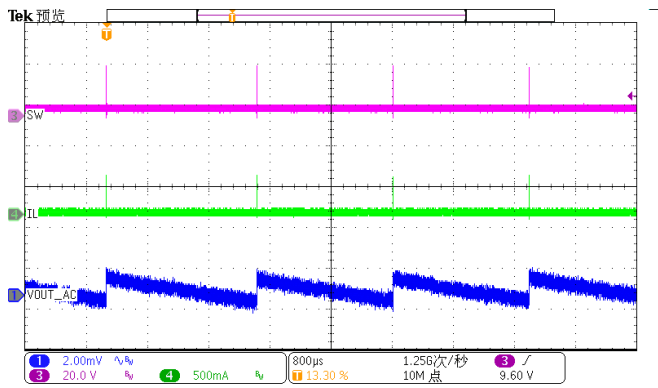
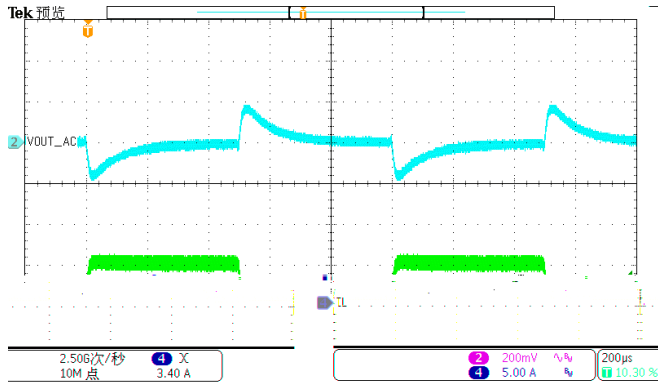




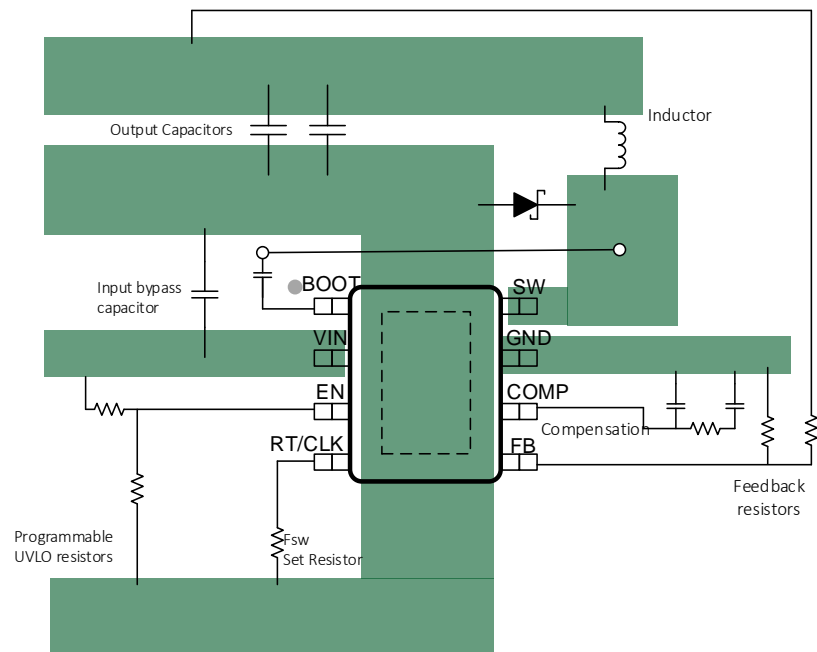
---





- 1.
- 2.
- 3.
- 4.
- 5.
- 6.
- 7.
- 8.
- 9.
- 10.





# TAPE AND REEL INFORMATION