
3V-40V Vin, 150mA, 2.5uA I_Q, Low-Dropout Regulator

GFB F

EF D POA

±

±

B MDB PO A

F POA P A

Revision 1.0: Release to production.

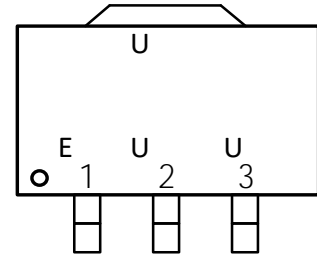
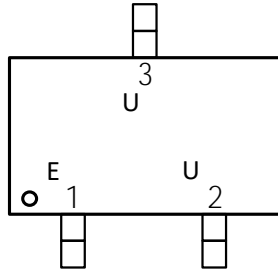
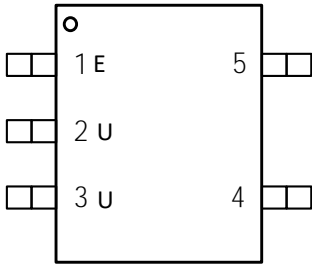
Revision 1.1: Update the thermal information and the thermal characteristic.

Revision 1.2: Update the thermal information and the thermal characteristic.

Revision 1.3: Update the TAPE AND REEL INFORMATION.

EF DFP EF AOGP NB POA

ODPOG H B POA



A

OG OD PO A

P D GXX A

P D GXX A

P D GXX A

A

A

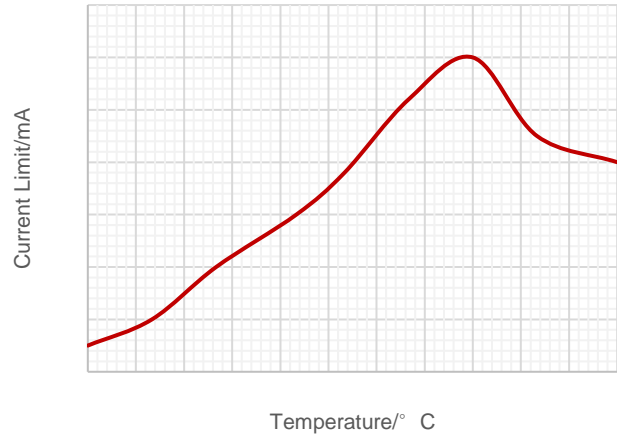
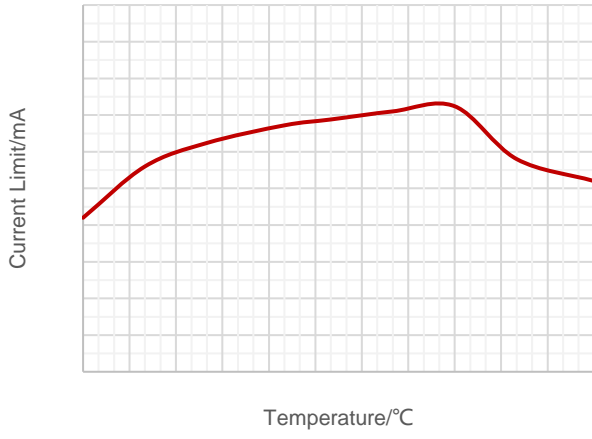
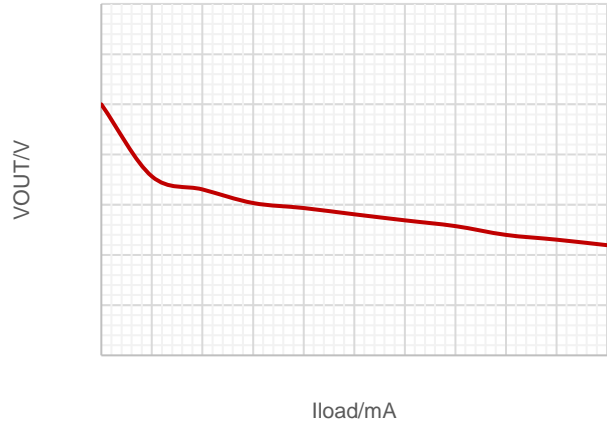
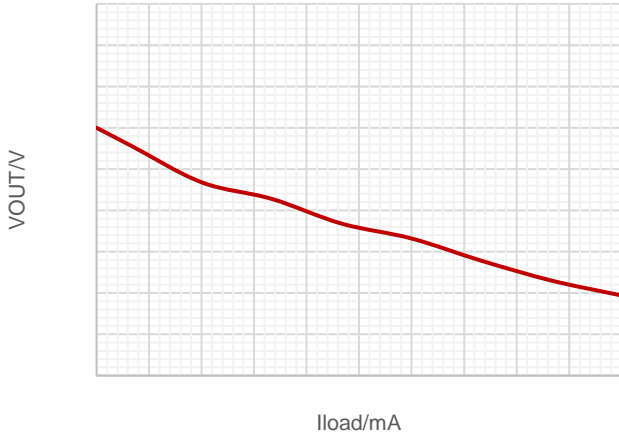
A

FDPNNFOEFEP F B OHADPOE PO A

--	--	--	--	--

DBM DI B BD F D A

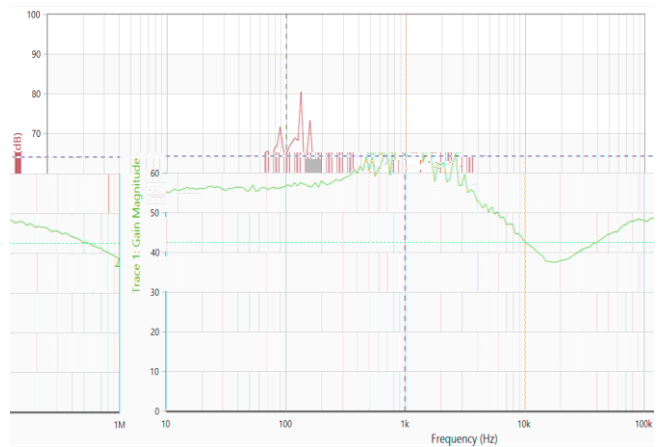
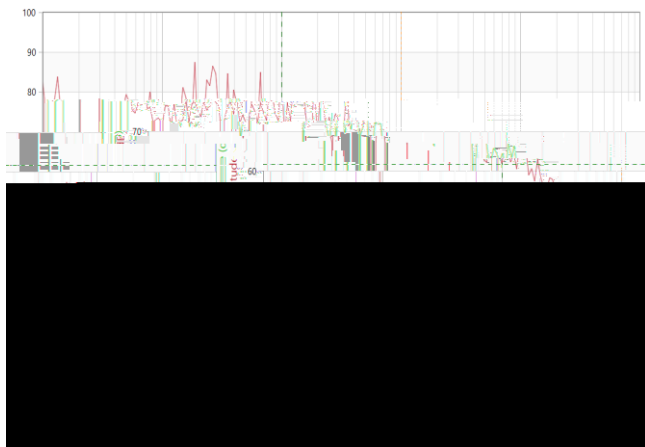
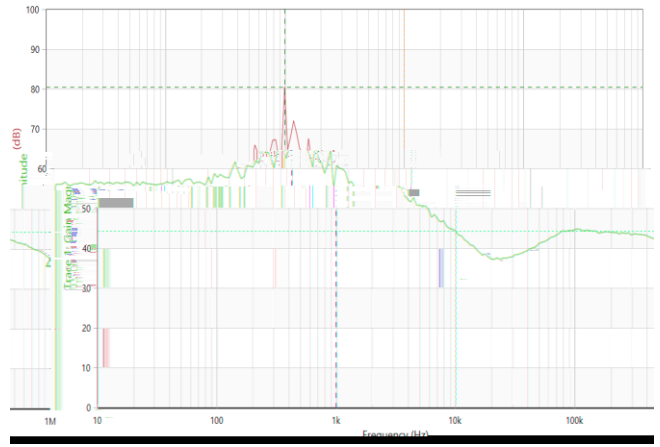
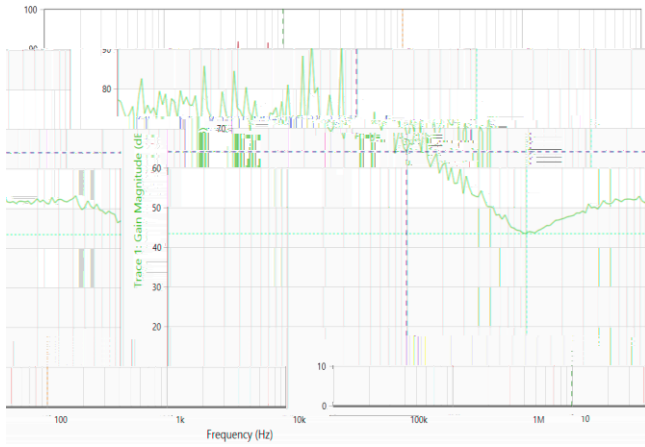
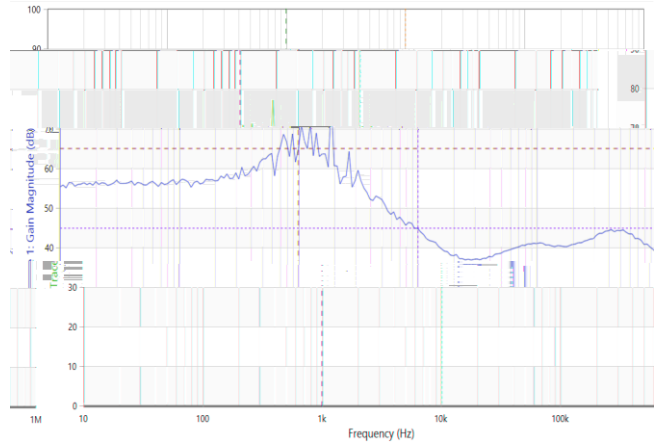
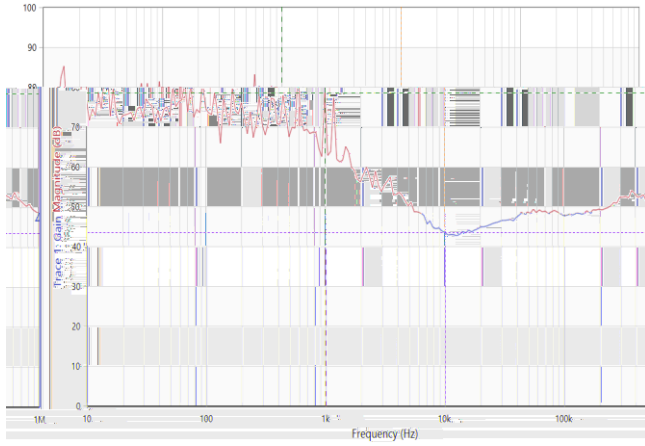
DBM DI B BD F D A A



A
A

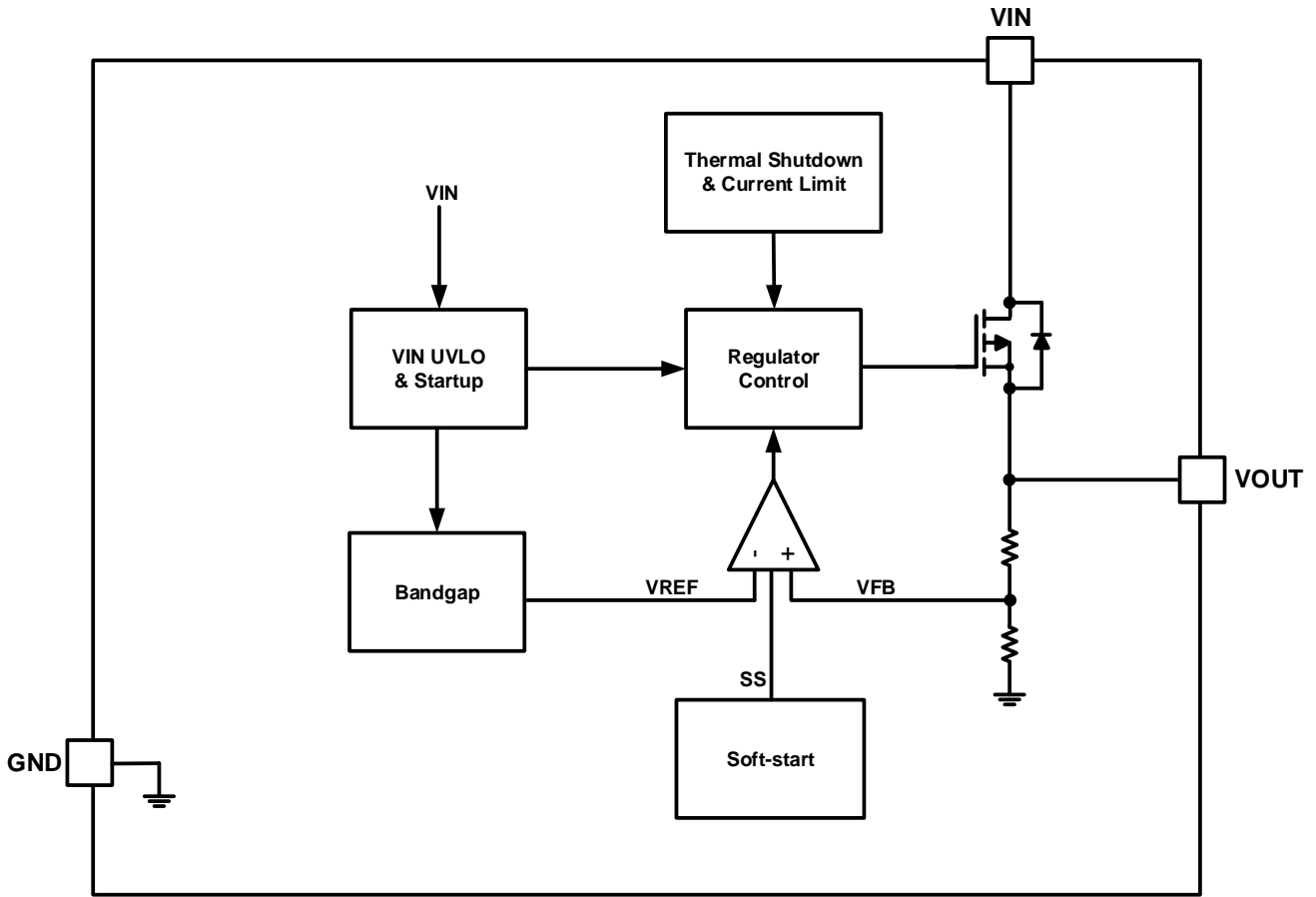
A

DBM DI B BD F DA A

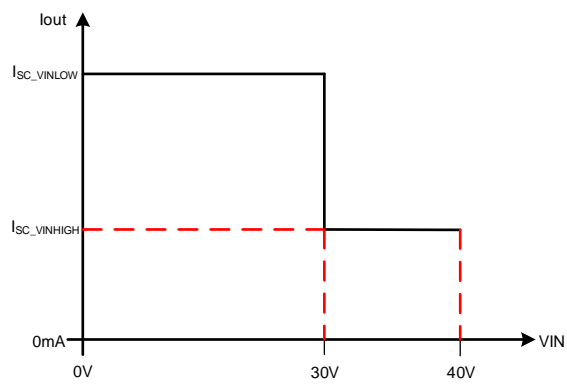


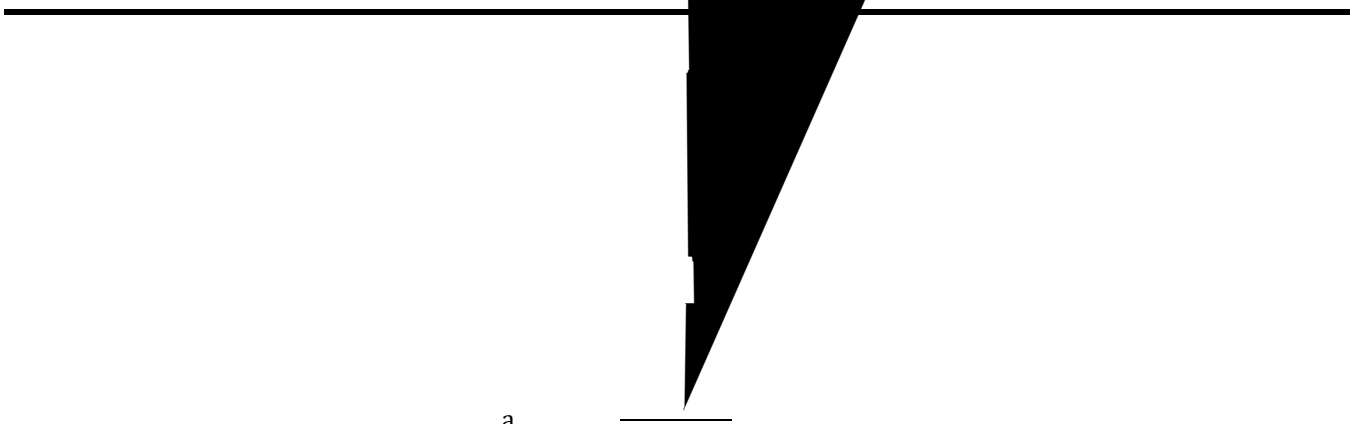
A

G OD POBMCMPDLÆ BH BNA

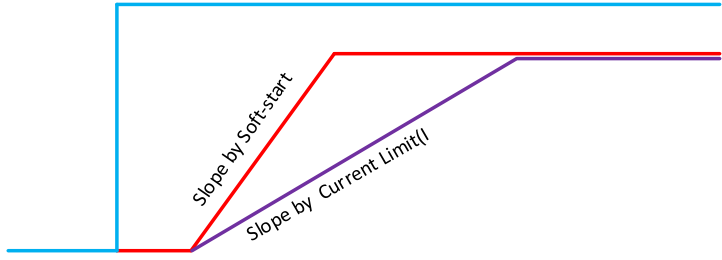


P F B POA

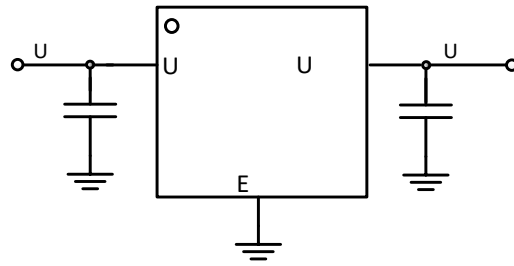


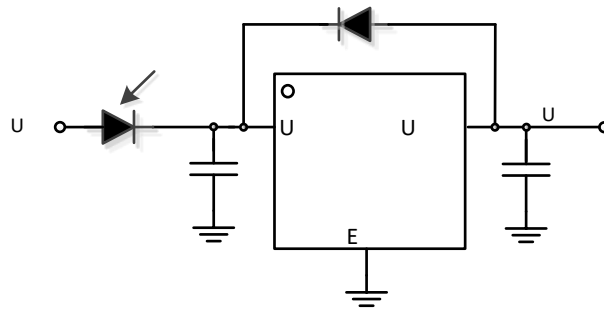


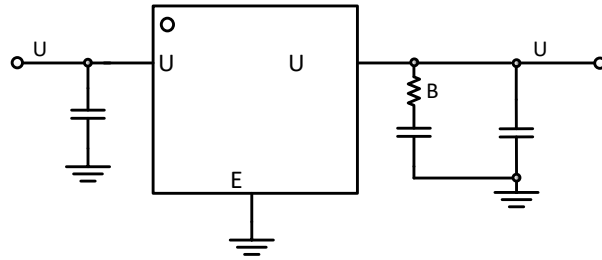
a

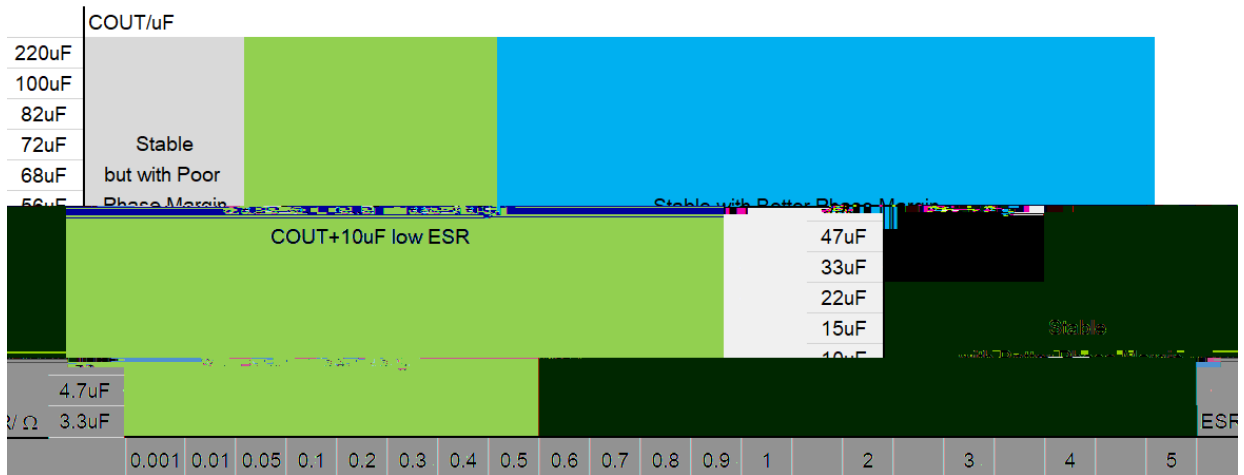


B MDB POAOGP NB POA







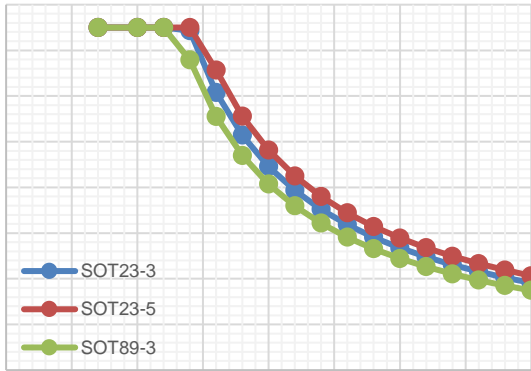


DC DC

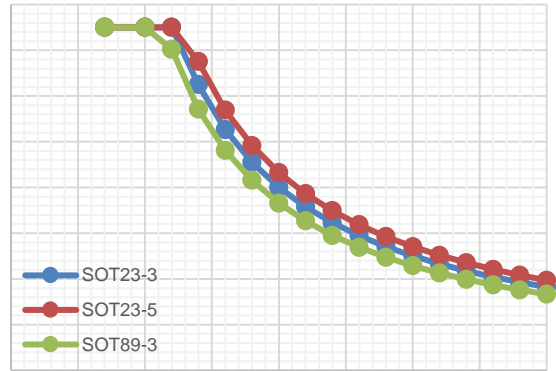


			°C

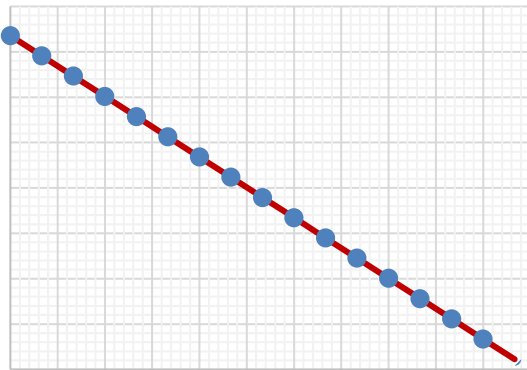
I F N B M D I B B D F D A



VIN/V



U U

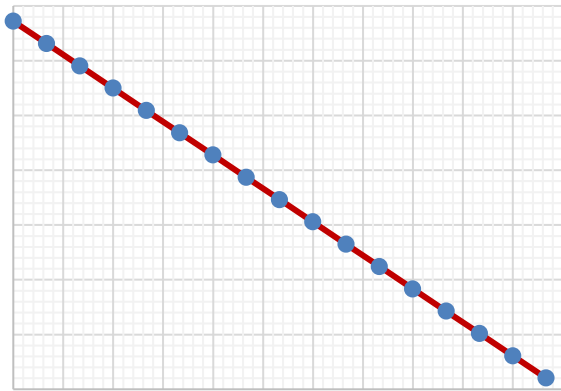


°C

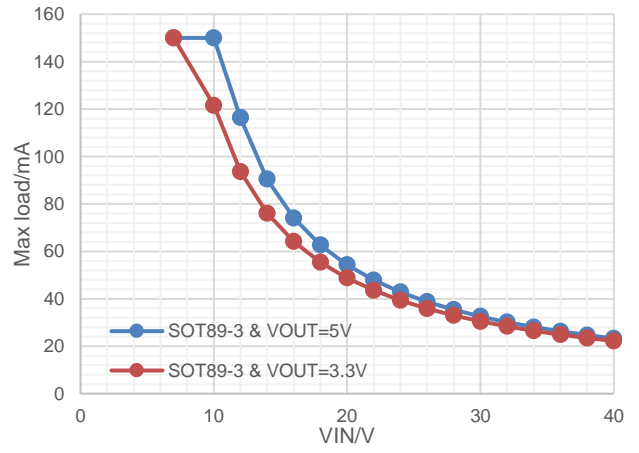
°C

°C

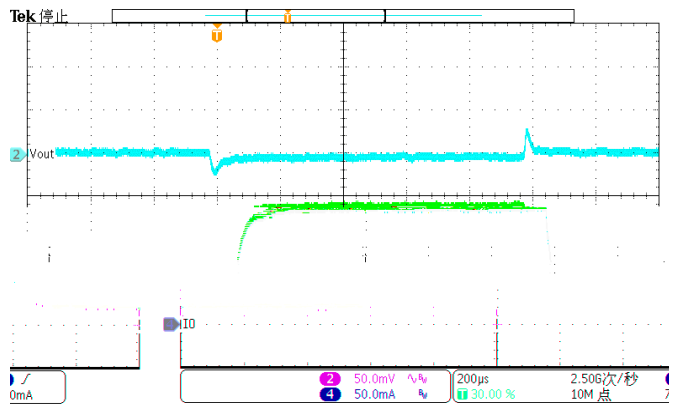
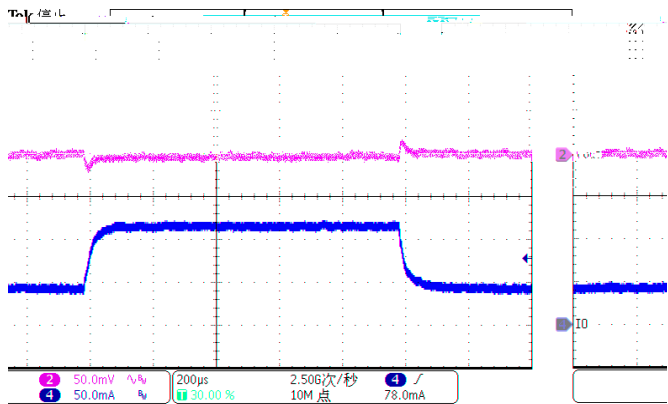
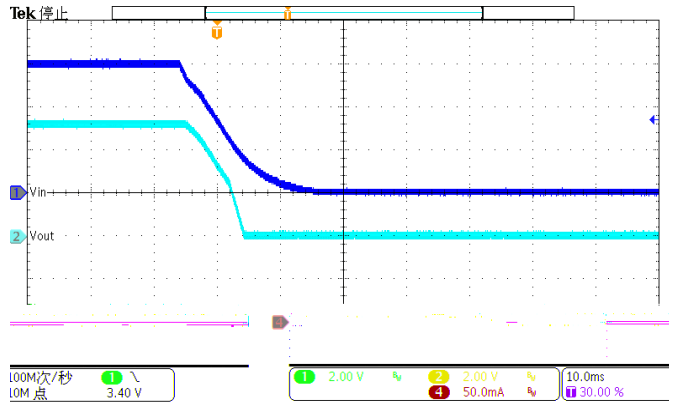
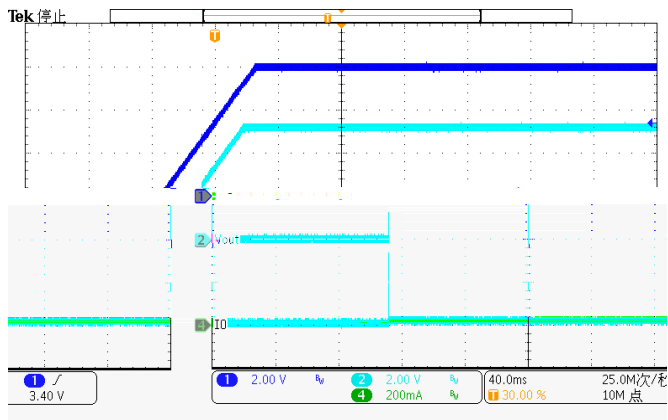
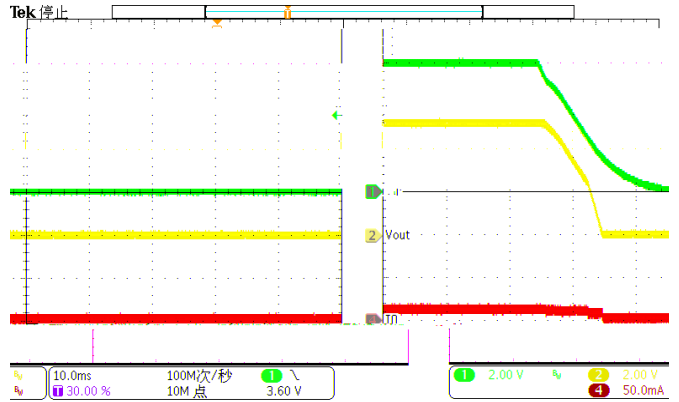
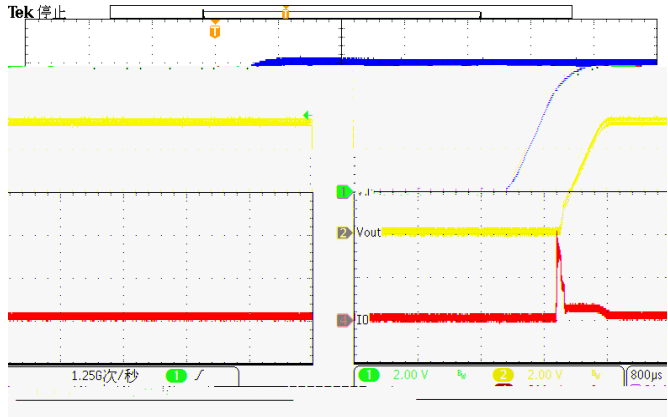
°C

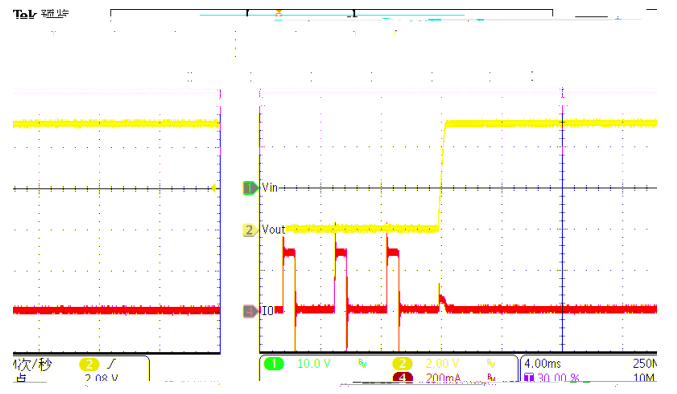
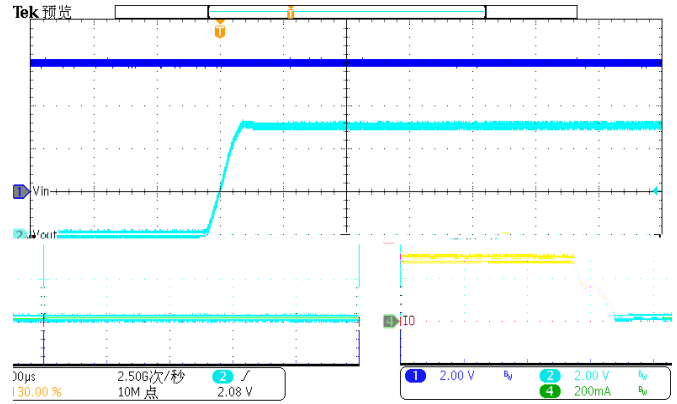
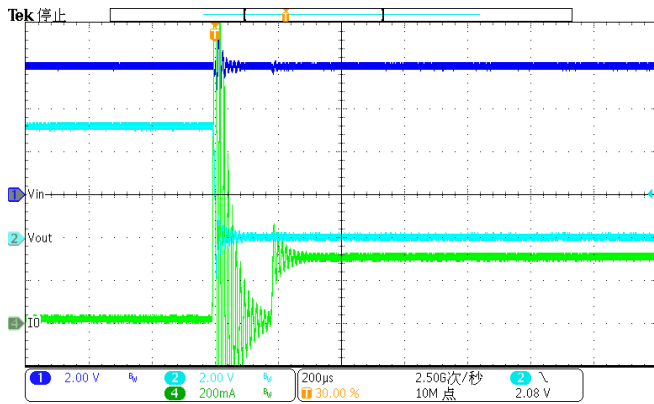
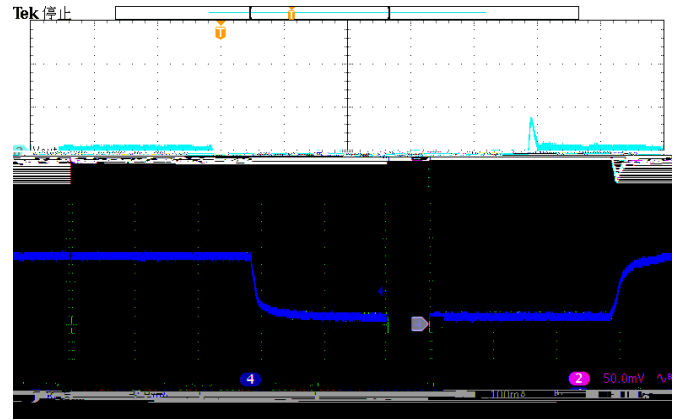
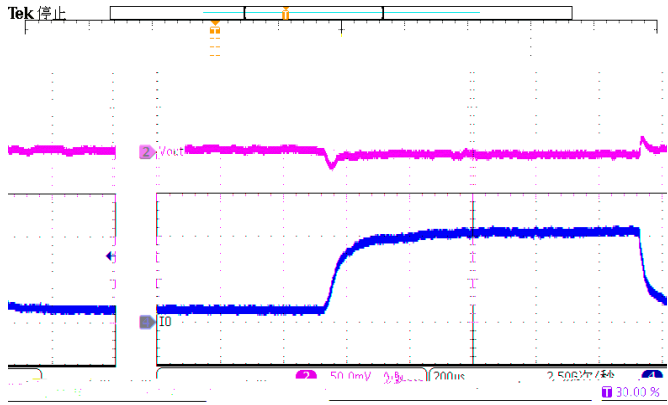


°C

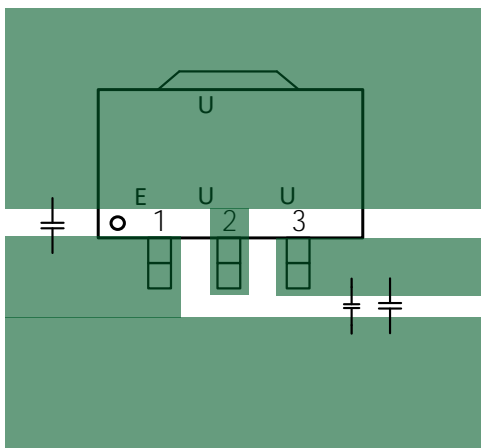
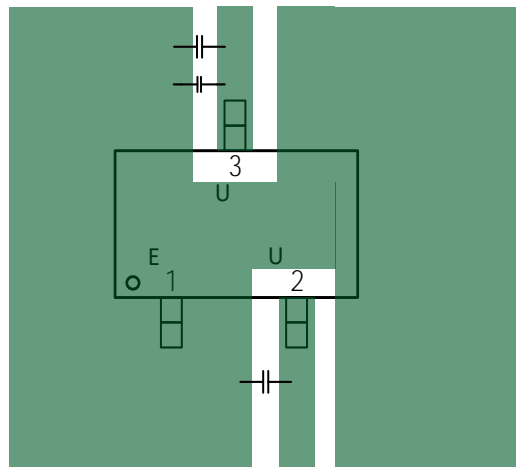
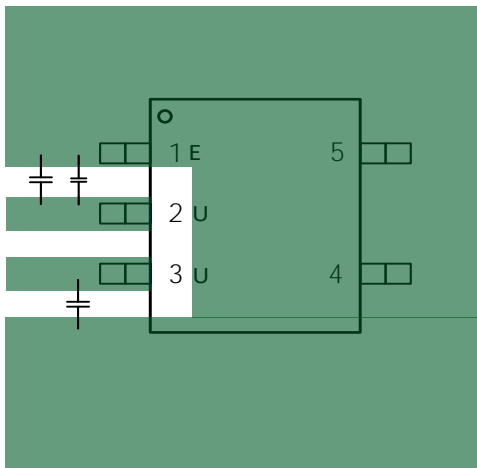


°C

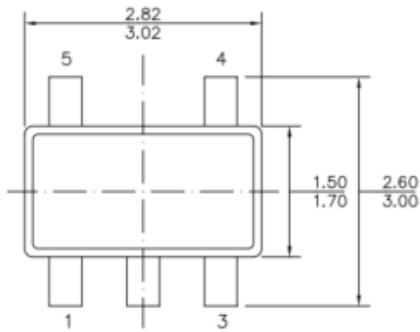




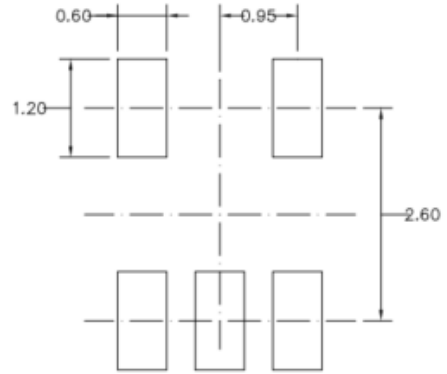
- 1.
- 2.
- 3.
- 4.
- 5.



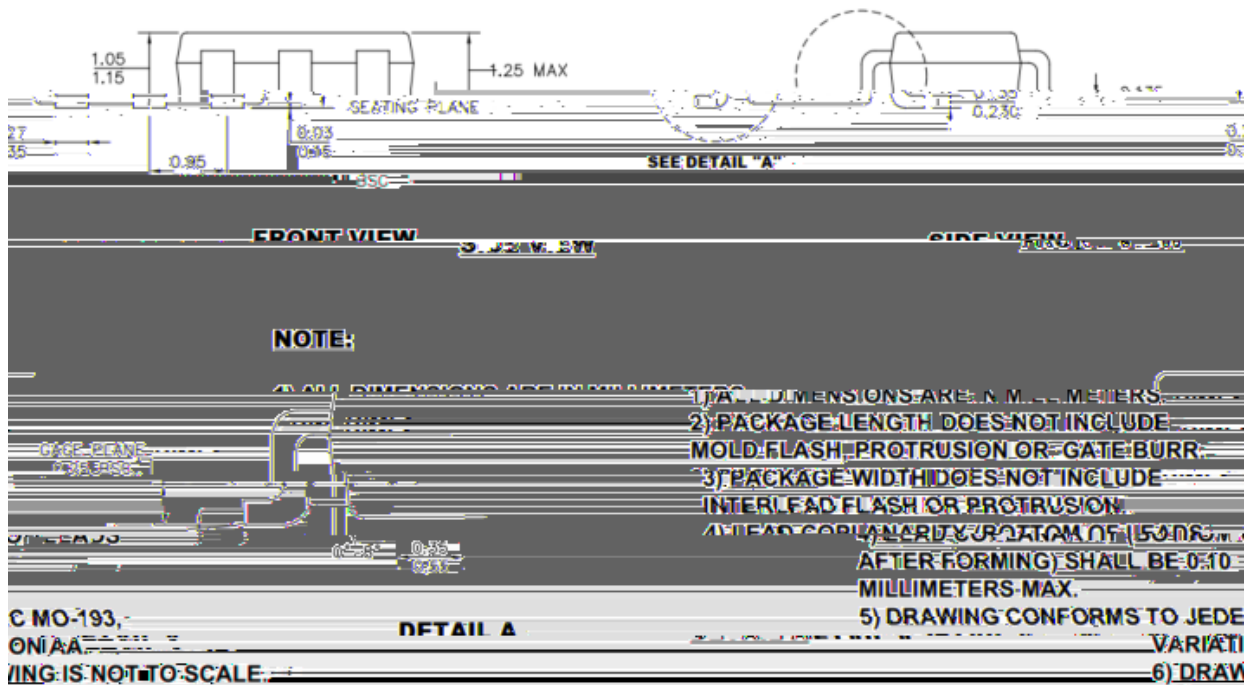
BDLBHFAOGP NB PO



TOP VIEW



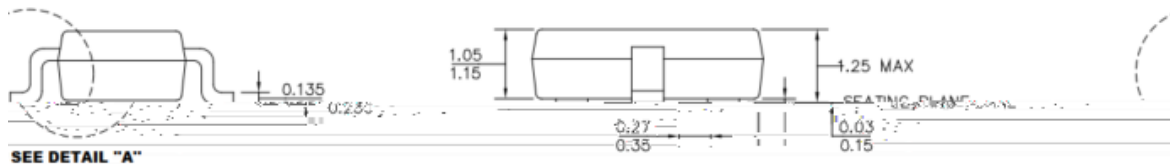
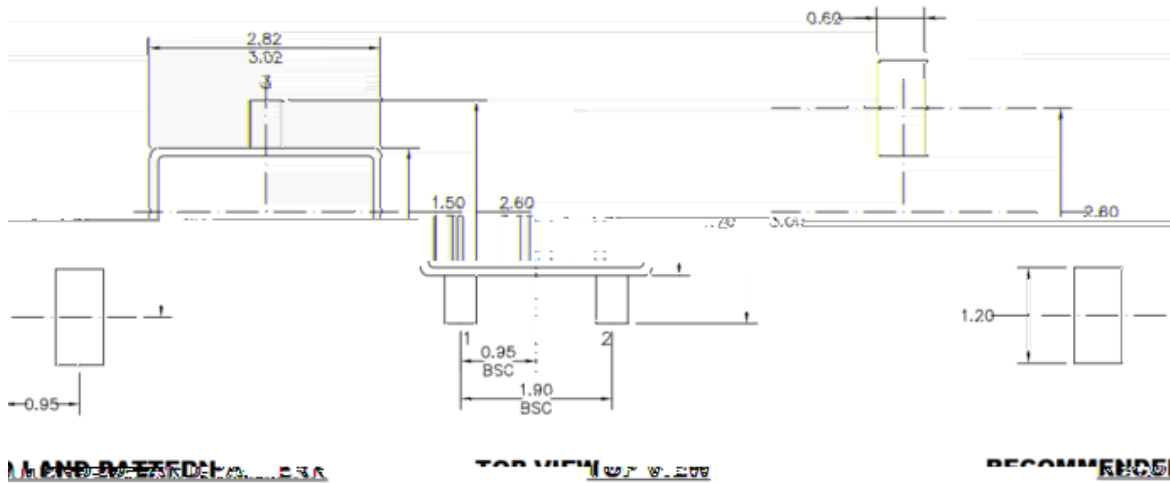
RECOMMENDED LAND PATTERN



1.
2.
3.
4.
5.
6.
A

A

BDLBHFAOGP NB PO



NOTE:

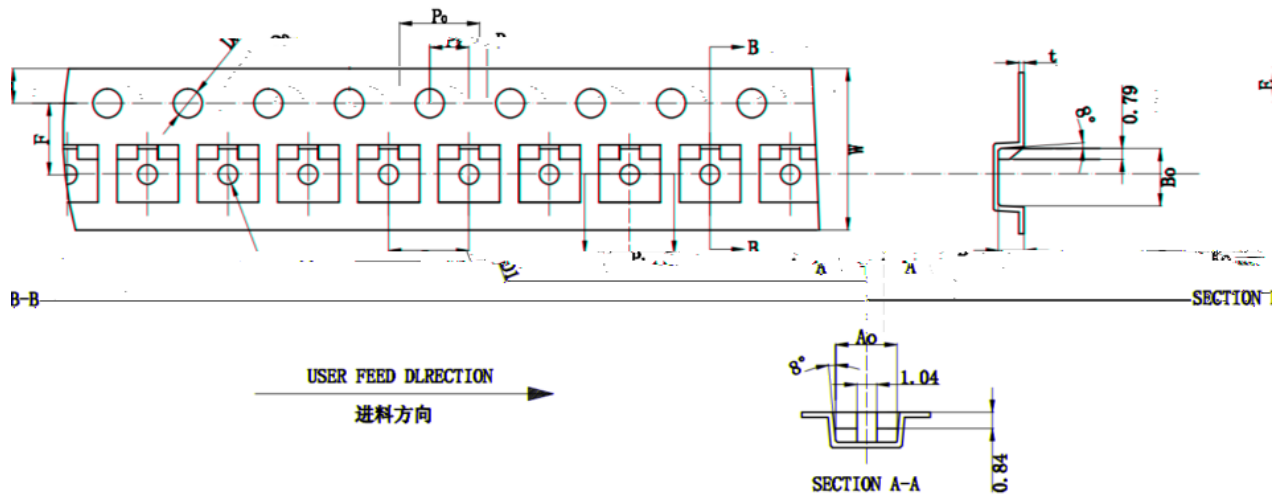
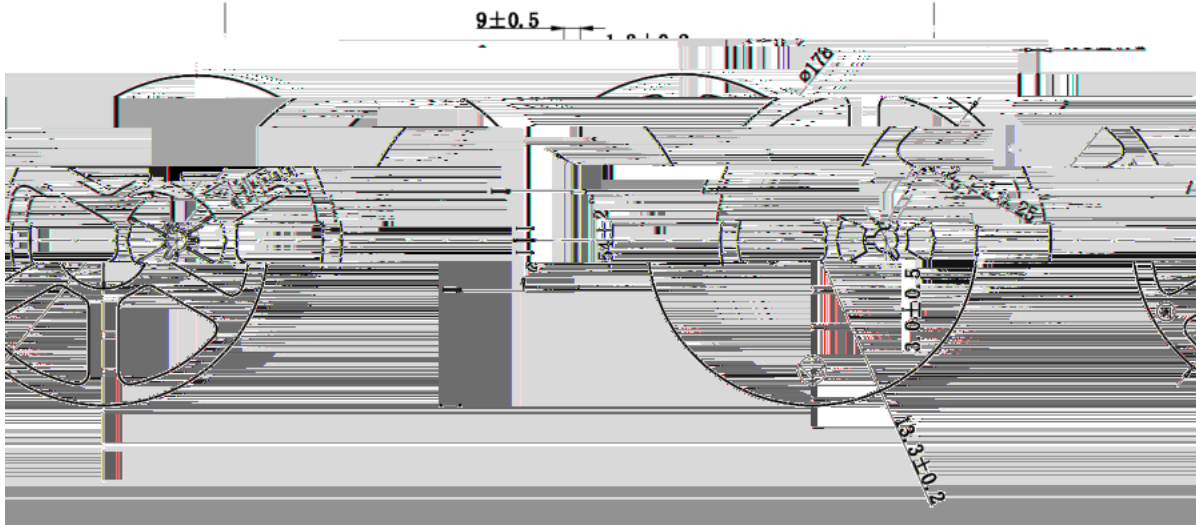
- 1) ALL DIMENSIONS ARE IN MILLIMETERS.
- 2) PACKAGE LENGTH DOES NOT INCLUDE MOLD FLASH, PROTRUSION OR GATE BURR.
- 3) PACKAGE WIDTH DOES NOT INCLUDE INTERLEAD FLASH OR PROTRUSION.
- 4) LEAD COPLANARITY (BOTTOM OF LEADS AFTER FORMING) SHALL BE 0.10 MILLIMETERS MAX.
- 5) DRAWING CONFORMS TO JEDEC MO-193, VARIATION AA.
- 6) DRAWING IS NOT TO SCALE.

DETAIL A

1.
2.
3.
4.
5.
6.
A

A

B FBOEA FFMAOGP NB POA



ITEM	W	Ao	Bo	Ko	E	F	D1	Do	Po	P1	P2	t
1												
2												
3												
4												
5												
6												

- 备注:
- 任意10个齿轮的累计误差不得超过±0.2mm
 - 材料厚度以载带边缘测量为准;
 - 载带长度方向100mm距离的非平行度不可超过1mm; 超过250mm不计算累计误差;
 - 非指明, 公差范围为: ±0.05mm
 - Ao、Bo为型腔内侧底部向上0.3mm处测量为准; Ko为内部深度;
 - 型腔外形凡未标明处倒角R为0.2-0.3

