

---

---

---

---

## REVISION HISTORY

## DEVICE ORDER INFORMATION


## ABSOLUTE MAXIMUM RATINGS

## PIN CONFIGURATION

---


**RECOMMENDED OPERATING CONDITIONS**


**ESD RATINGS**


- (1)
- (2)

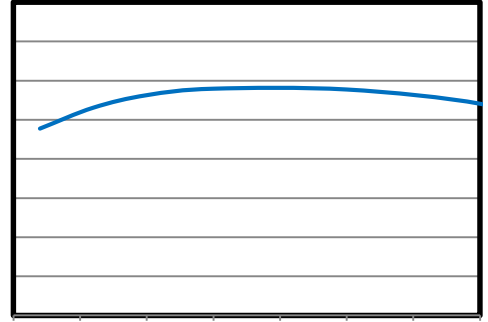
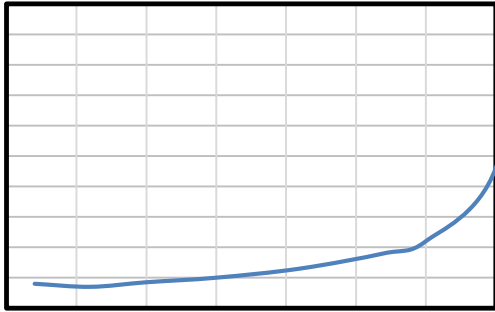
**THERMAL INFORMATION**


---

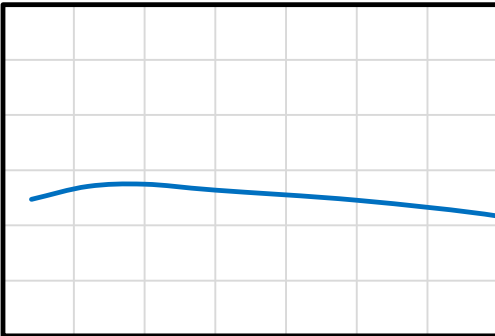
---


---

P

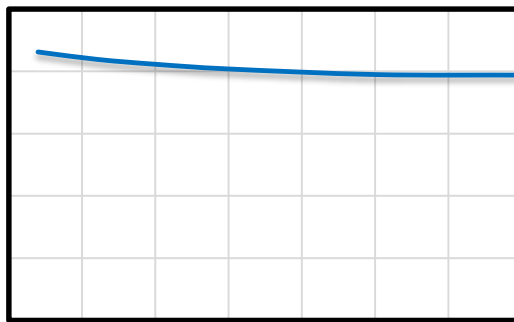
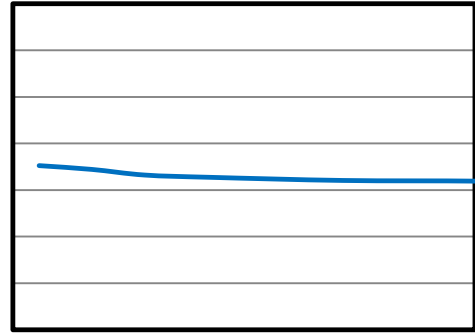


L

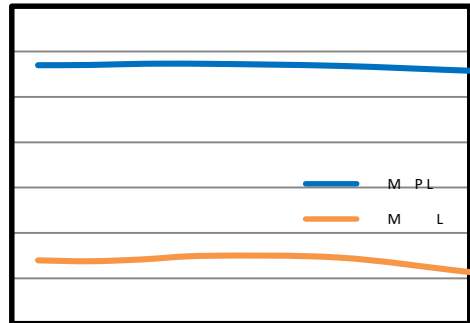


-50 -25 0 25 50 75 100 125

9.00  
8.00  
7.00  
6.00  
5.00  
4.00  
3.00  
2.00



Temperature (°C)



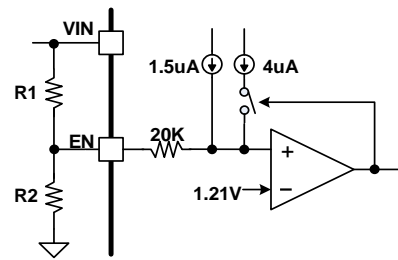


FUNCTIONAL BLOCK DIAGRAM

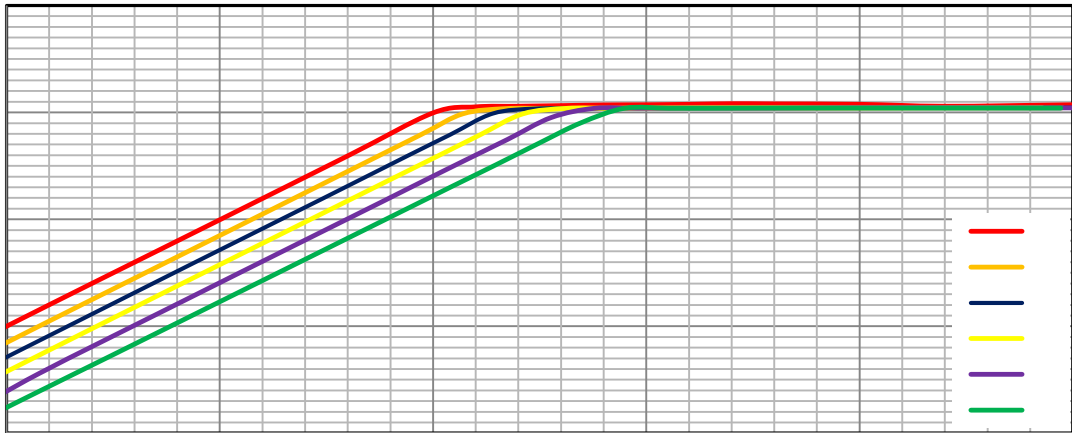


---

**OPERATION**

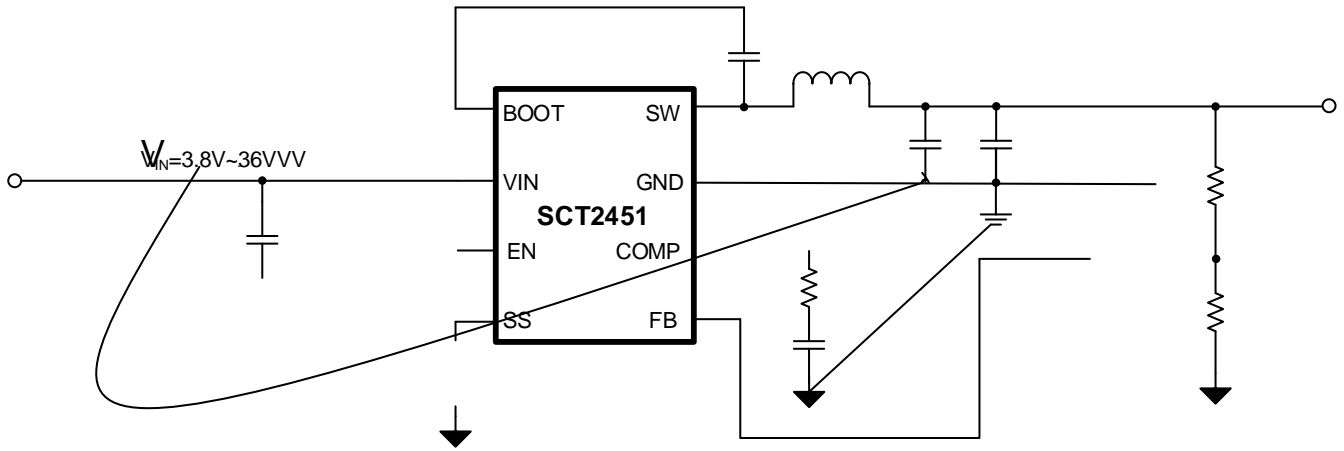


1%





# APPLICATION INFORMATION



	24V Normal 3.8V to 36V
	16.5mV
	Vout = 135mV




—

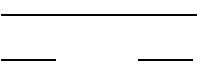
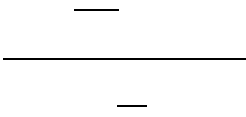
—

—

WR

'iily r ~ð y(t8t0 Ô`











\_\_\_\_\_

\_\_\_\_\_

\_\_\_\_\_

\_\_\_\_\_

\_\_\_\_\_

\_\_\_\_\_

\_\_\_\_\_

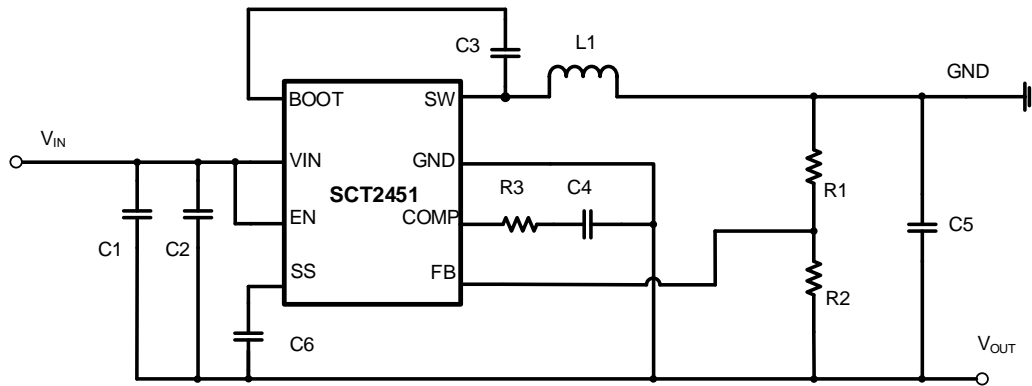
\_\_\_\_\_

\_\_\_\_\_

\_\_\_\_\_



		M			





---

1.

2.

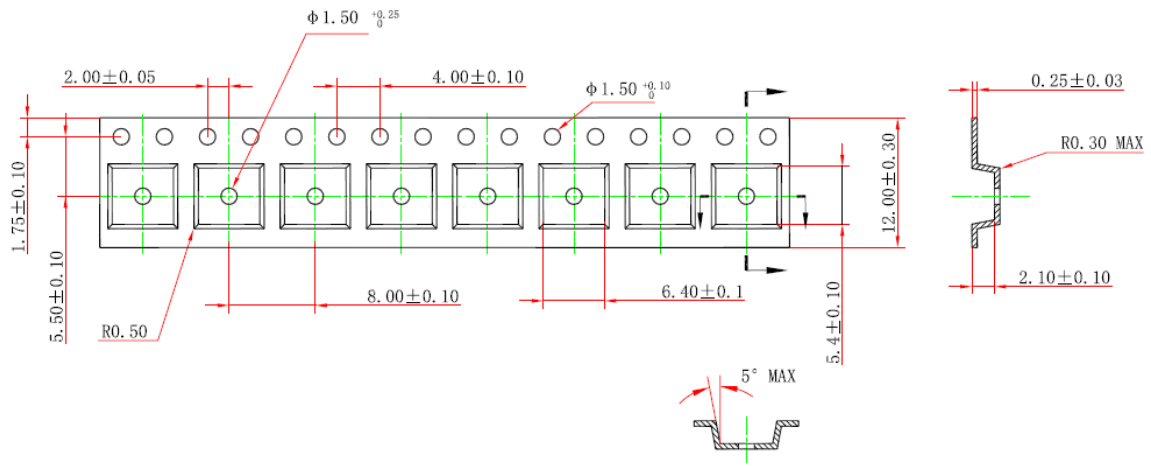
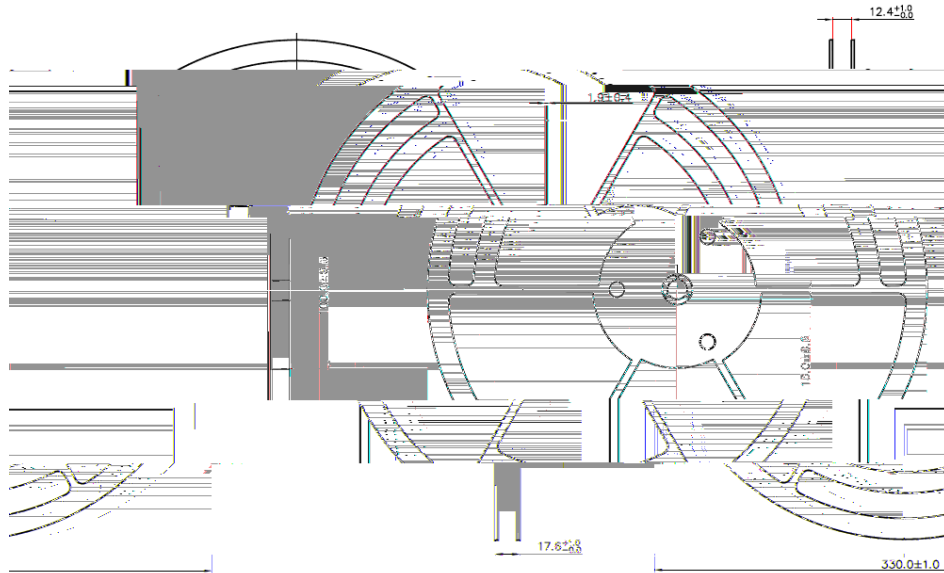
3.

4.

---

## PACKAGE INFORMATION

# TAPE AND REEL INFORMATION



## RELATED PARTS